

Demand Responsive Transport ("Taxi" Service)

Demand Responsive Transport (DRT) is a service provided by Stirling Council for people who would normally travel by public transport, but have no direct access to a regular bus service due to living in a remote location.



traveline
public transport info
0871 200 22 33
www.travelinescotland.com

Open daily 7am to 9pm.
Calls charged at 10p per minute.
Calls from Mobile Phones may vary.



Text Bus Stop SMS Number
(can be found at bus stop, on public transport information)
to **0777 608 2 608**

txt2traveline
for bus times

You will receive a message telling you the times of the next scheduled departure.
SMS charged at 25p plus your normal network charge.



traveline NextBuses

To find out the times of the next buses at any stop in scotland, visit www.nextbuses.mobi

The information printed in this leaflet is believed to be correct at the time of preparation but is not guaranteed. Alterations to services may occur at short notice and this information cannot be updated. Neither Stirling Council nor the transport operators will accept liability for any loss, damage or inconvenience caused through error, omission or out of date information.

Public Transport Co-ordination, Stirling Bus Station,
Goosecroft Road, STIRLING FK8 1PF

June 2010



To book transport tel: 0844 567 5670;
or e-mail: sales@aberfoylecoaches.com;
or on line via website: www.aberfoylecoaches.com
Text: 0844 567 5670



Bookings should be made 24 hours in advance, although every effort will be made to accommodate passengers making bookings on shorter notice.

DRT within Stirling Council Area

Enjoy the flexible benefits of DRT services including:

Going shopping;

Going to work;

Visiting historical sites and places of scenic beauty;

Accessing health, leisure and recreation facilities.

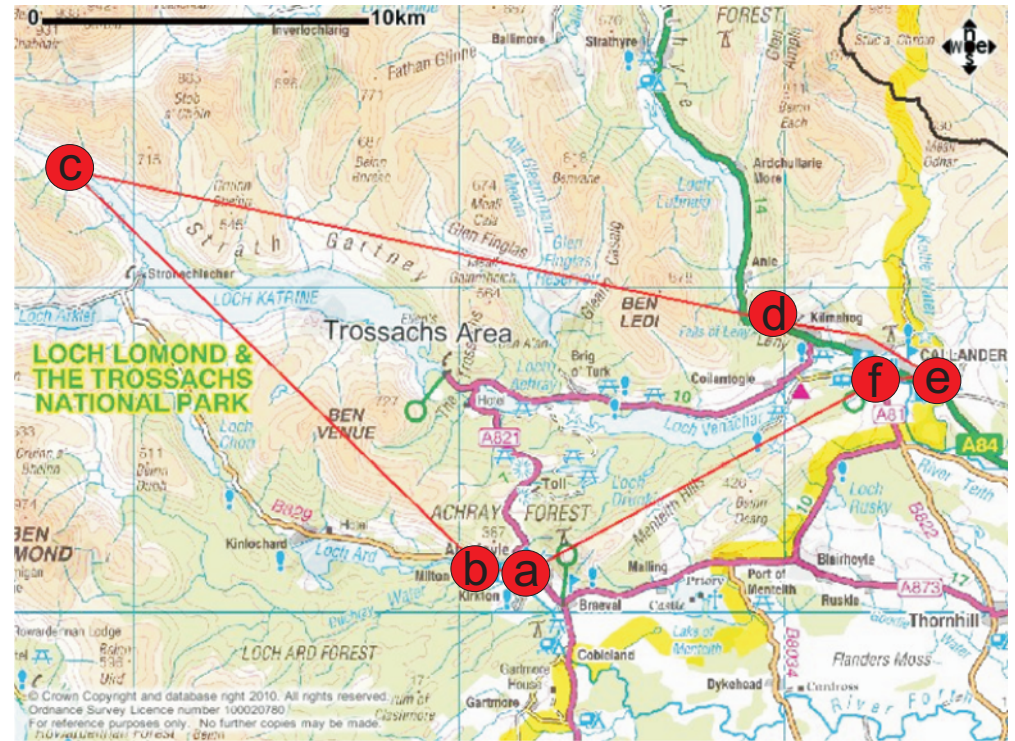
DRT is available Mondays to Saturdays between 0700 and 2130, and also between 0700 and 2130 on Sundays in the Balquhiddy and Trossachs areas.

DRT does not operate on 25-26 December or 1-2 January.

Passengers pay the cost of a bus fare and Scottish National Entitlement Cards are accepted, as on bus services.



Trossachs Area



The Trossachs Scheme covers the area bounded by:

- (a) A821 at east end of Aberfoyle village;
- (b) B829 at west end of Aberfoyle village;
- (c) unclassified road on north shore of Loch Katrine at Glengyle House;
- (d) A84 at west end of Kilmahog;
- (e) A84 at east end of Callander;
- (f) A81 at south end of Callander.

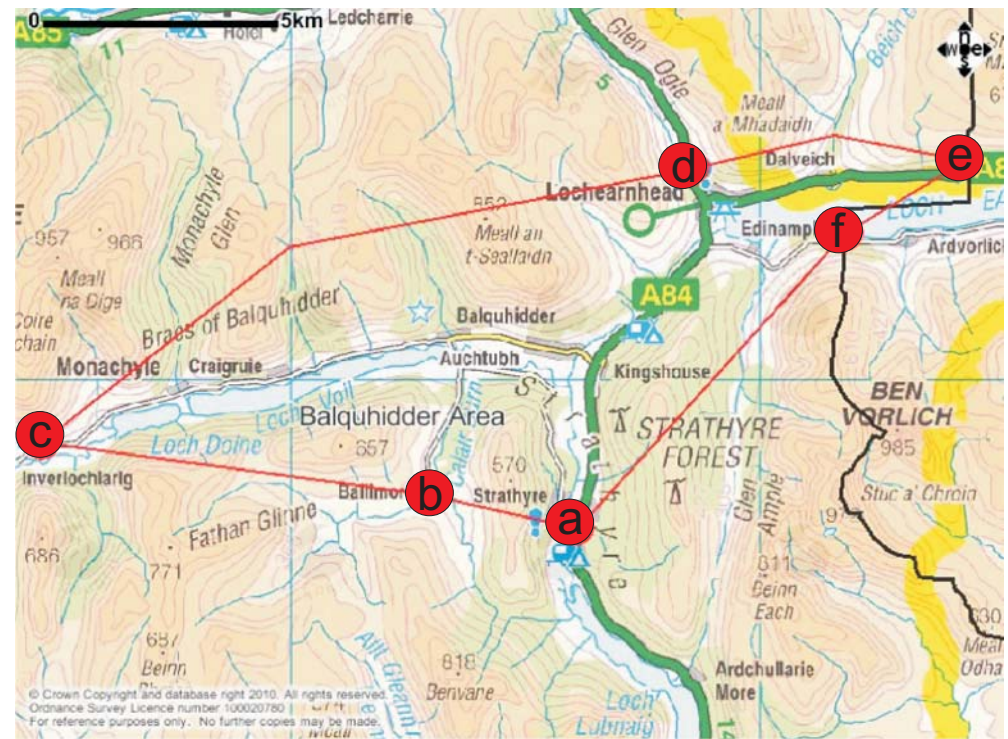
Strathard Area



The Strathard Scheme covers the area bounded by:

- (a) A821 at east end of Aberfoyle village;
- (b) end of public road at Inversnaid;
- (c) end of public road at Stronachlachar;
- (d) A821 at north end of Aberfoyle village.

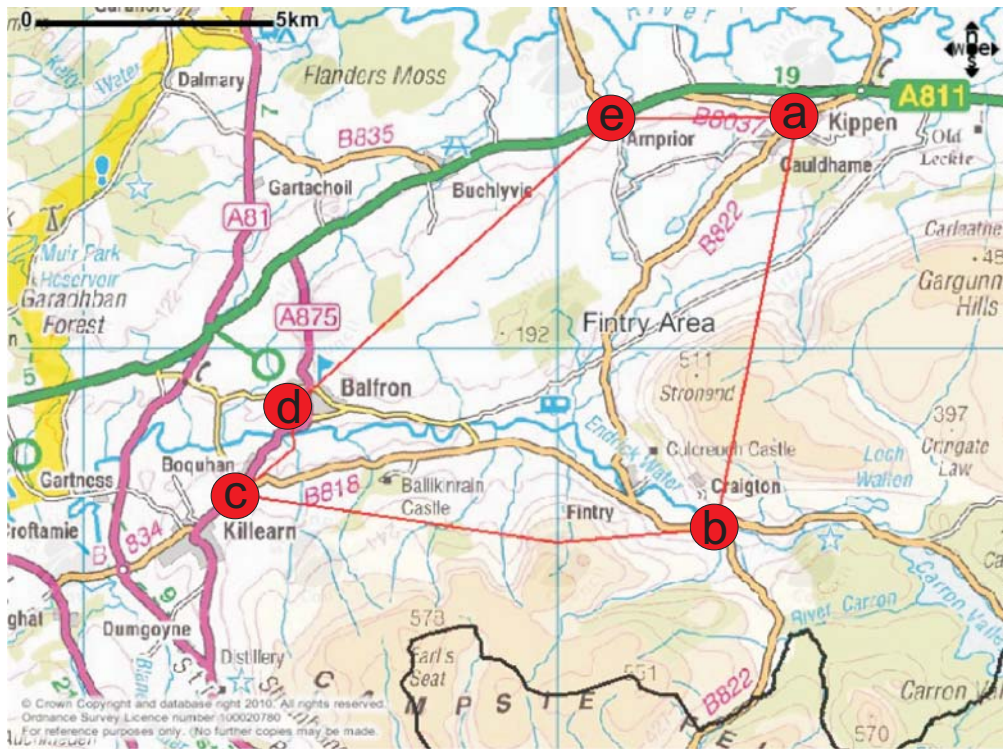
Balquhiddier Area



The Balquhiddier Scheme covers the area bounded by:

- (a) A84 at the south end of Strathyre village;
- (b) end of public road at Ballimore, south of Balquhiddier;
- (c) end of public road at Inverlochlarig, west of Balquhiddier;
- (d) A85 at north end of Locheearnhead village;
- (e) Council boundary on A85 east of Locheearnhead;
- (f) Council boundary on South Loch Earn Road, east of Edinample.

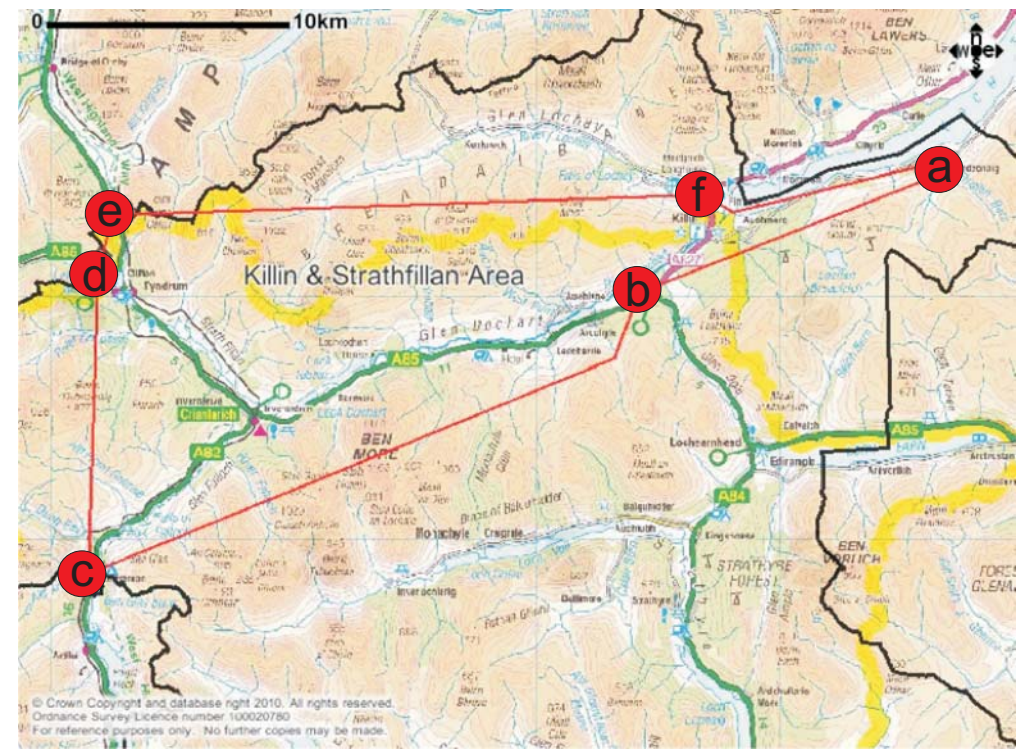
Fintry Area



The Balquhiddy Scheme covers the area bounded by:

- (a) Kippen Cross bus stops, Kippen;
- (b) junction of B818 and B822 at Gonachan;
- (c) junction of A875 and B818 at Blackhills Crossroads;
- (d) Buchanan Street bus stops, Balfroun;
- (e) Amprior bus stops on A811.

Killin & Strathfillan Area



The Killin & Strathfillan Scheme covers the area bounded by:

- (a) Ardeonaig Hotel;
- (b) junction of A85 and A827 at Lix Toll;
- (c) Council boundary on A82 at Inverarnan ;
- (d) Council boundary on A85 west of Tyndrum;
- (e) Council boundary on A82 north of Tyndrum;
- (f) A827 at Bridge of Lochay, north of Killin.